



YARD FORCE

Press Pack

FOR LIFE ON THE GO

Welcome



“At Yard Force, we’re passionate about helping people create and maintain beautiful outdoor spaces with innovative, high-performance equipment. Our mission is to bring efficiency, ease, and joy to gardening and outdoor maintenance.”
- Team Yard Force





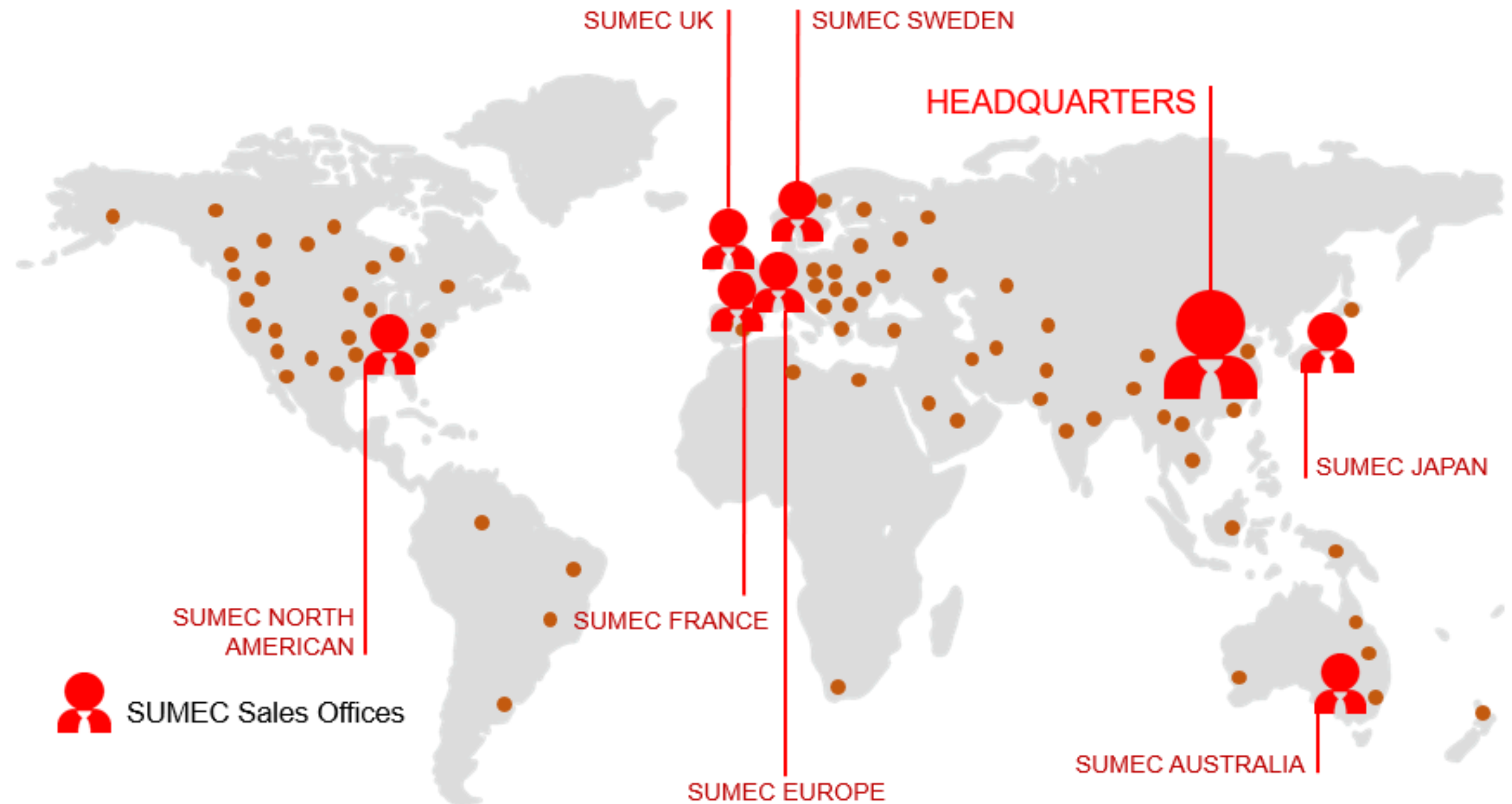
Head Office



SUMEC Hardware & Tools Co., Ltd is the subsidiary of SUMEC GROUP, founded in 1978. We specialise in the design and manufacture of garden tools, high pressure washers and power tools.

Our product ranges can be found in more than 60 countries.

-  Core Member of Fortune Global 500
-  20K+ Worldwide Employees
-  40+ Years of Development History
-  35 Overseas Companies
-  Sumec UK headquarters located in North Yorkshire, UK



Our Mission



Who We Are:

Leading experts in garden power equipment, blending cutting-edge technology with user-friendly design.

Our Products:

Offering a diverse range of cordless, electric, and petrol-powered garden tools, from robotic and ride-on mowers to versatile handheld equipment.

Sustainability:

Committed to reducing environmental impact with energy-efficient tools and eco-conscious practices.

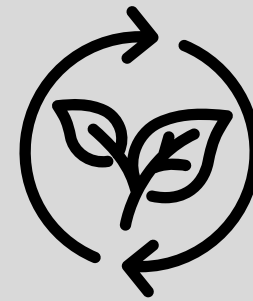


Our Values



Innovation

We prioritise innovation as a driving force behind everything we do. We are passionate about pushing boundaries, creating forward-thinking solutions that enhance performance, ease, and sustainability in every product.



Sustainability

At Yard Force, sustainability is more than a commitment, it's a core value. We believe in protecting the planet for future generations and prioritise eco-conscious practices throughout.



Support

Support is at the heart of our values. Our specialist customer experience team are committed to providing our customers with expert product assistance and technical guidance, every step of the way.

What we do



Innovative Product Development

Innovation drives everything we do. Our dedicated R&D teams are constantly striving to enrich the gardening equipment market with cutting-edge, ergonomically enhanced products designed to simplify and enhance outdoor tasks. Our broad product range reflects our commitment to delivering reliable, high-performance solutions for every gardening need.

Customer & Product Support

At Yard Force, we prioritise exceptional customer and product support to ensure every user gets the most from our products. Whether it's maintenance advice, or replacement parts, we're committed to providing reliable solutions and ensuring our customers feel confident with their Yard Force products.



What we do

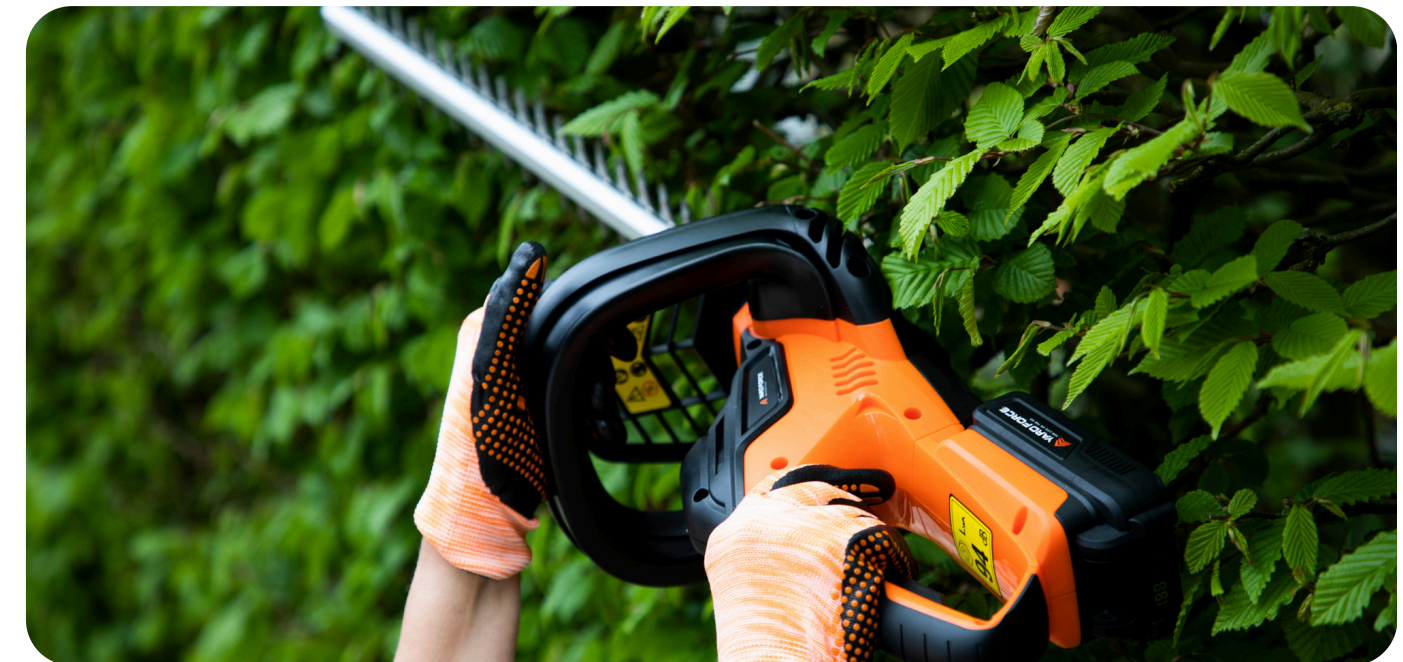


Sustainability Efforts

Sustainability is at the heart of our operations. We're committed to reducing our environmental footprint by ensuring our factories use renewable energy sources, and all our packaging is fully recyclable. By integrating eco-conscious practices into our product development and manufacturing processes, we strive to create innovative gardening solutions that support a greener, more sustainable future.

Worldwide Service

Due to the worldwide market presence of Yard Force, a comprehensive, reliable service is guaranteed. Offices across the globe including, UK, US and Europe, provide our customers with expert support by a competent partner who recognises regional, economic developments and offers professional solutions.



How we stay sustainable



“Our goal: Become a ‘Carbon Neutral Enterprise’ with Zero Net Emissions by 2030”

Solar panels installed to SMV II Factory generates over 30,000kWh, reducing CO2 emissions by approximately 30 tonnes per year.

Owners of 176 low-carbon technology patent products with continuous investment in technological transformation, manufacturing, digitalisation and automated production lines.



Product Categories



Robotic Mowers



The Yard Force robotic mower range is ideal for small urban lawns and medium-sized rural gardens, all operated remotely via Bluetooth™.

Ride-On Mower



The ProRider E559 battery operated ride-on mower is designed to meet today's demands for greener living by offering zero emissions, and powerful cutting for total user comfort.

Pressure Washers



The Yard Force pressure washer range offer compact, high-performance models, perfect for tackling all your outdoor cleaning tasks with ease.

Handheld



The Yard Force handheld products include hedge trimmers, grass trimmers, blower vacs, chainsaws and many more products to complete any garden task effortlessly.

Lawnmowers



The Yard Force lawnmower range includes corded, cordless and petrol lawnmowers for various garden sizes, always at peak performance.

Lifestyle



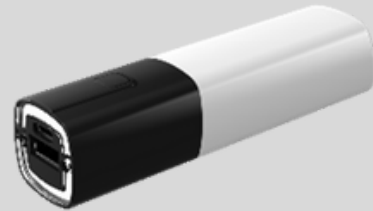
The Yard Force lifestyle range includes cordless indoors and outdoors item, for life and power on the go.

Battery Platform Series



VITA

4V Urban Series



- LED illumination stripe
- USB output charging
- Type-C in/out
- 21700 high density cell

iFlex

12V Series



- Battery level indicator
- USB output
- 21700 high density cell
- PCB heat protection

CR20v



- Power LED showing power levels
- PCB protection against overcharging/discharging
- PCB heat protection

GR40v



- Power LED showing % power levels
- PCB protection against overcharging/discharging
- PCB heat protection

MR60v



- Power LED showing % power levels
- PCB protection against overcharging/discharging
- PCB heat protection

TR108v



- Carry handle
- Power LED showing % power levels
- PCB protection against overcharging/discharging
- PCB heat protection

Latest Range



CR20v

The Yard Force CR20 range offers a plethora of garden power equipment to achieve all gardening tasks, powered by our CR20 battery platform.



The Powerhouse For Our Full CR20 Range



Available in:
2.0 Ah
2.5 Ah
4.0 Ah

...and our
NEW 5.0Ah!

Robotic Mower Range



Yard Force use latest technologies and patented features to bring you top of the range garden products. With a robotic mower range from easy-to-use plug and play models for lawns of 260m², right through to the boundary-less, GPS guided Revola™ covering lawns up to 3000m², we have products to meet all your garden requirements.

We are proud to be the first robotic mower manufacturer to receive the Green Product Approval marking from TÜV Rheinland and be members of the Global Ecolabelling Network.



EasyMow 260B



up to 260m²

MB400



up to 400m²

SA650B



up to 650m²

MB800



up to 800m²

New Product



MB400 - Robotic Lawnmower



Discover the Yard Force MB400 Robotic Lawnmower, your new companion to achieving a pristine lawn effortlessly. Specifically designed for gardens up to 400m², this robotic lawnmower ensures precise grass cutting thanks to its razor-sharp blades.

Powerful Performance:

Equipped with built-in a 20V/2.0Ah lithium-ion battery for durable and efficient operation.

Precision Cutting:

The 16cm cutting width combined with the adjustable cutting heights from 20-55mm, ensures thorough and precise coverage for a manicured lawn.

Smart Control:

Bluetooth app control for convenient scheduling of the mowing time.



Spotlight Product



ProRider E559 Ride-On Mower

The ProRider E559 battery operated ride-on mower is the latest addition to the Yard Force garden product range.



Battery Operated

- Brushless motor, zero emissions
- 56V/50Ah lithium LFP battery
- 90 min runtime



Powerful Cutting Performance

- Twin blade cutting deck
- 96cm cutting width
- 12 adjustable cutting heights ranging 38-114mm
- Mulch, side chute, collect, reverse mow

Spotlight Product



ProRider E559 Ride-On Mower

Designed to meet today's demands for greener living, this stylish ride-on mower offers zero emissions, powerful cutting, super-easy steering and an advanced control panel, for total user comfort.



Easy Steering

- Compact design, large front wheels, tight turning circle
- 12.9km/h, controlled hill descent function
- Adjustable seat, cruise control, patented parking brake



Advanced Control Panel

- Advanced control panel and LED headlight
- LCD display show battery level and mileage
- Includes cup holder and USB-A charging port

Partners



Where to find us

The image displays a collection of logos for various retail partners and distributors. The logos are arranged in a grid-like fashion, with some larger than others. The logos include:

- Robert Dyas: Home • Kitchen • DIY • Garden
- Homebase
- wowcher
- Cherry Lane Garden Centres
- QD stores
- ManoMano
- Elmers Hardware
- go groopie: FEEL GOOD DEALS
- HIGH TREES LAWNMOWER CENTRE: GARDEN & ESTATE MACHINERY, SALES | SERVICE | REPAIRS | PARTS
- The Range: Home, Leisure & Garden
- Colour Supplies: your home & garden superstore
- cleanstore: A JMS Company, Established 1978
- Downtown: HOME | FASHION | GARDEN
- wilko
- cheapmowers.com
- B&Q
- QVC
- CHARLES DICKENS
- YARD FORCE: uk.yardforce.eu
- GROUPON
- GENFITT: A KRAMP COMPANY
- charlies: Home, Garden & The Great Outdoors
- Costco WHOLESALE
- Argos
- Studio
- frugo
- epic TOOLS
- amazon
- Wickes
- ROMERILS
- OnBuy.com
- Click4mowers
- Trago
- ebay
- amazon
- ROMERILS
- OnBuy.com
- cmo stores.com
- TOOLSTATION
- MOTORS & MOWERS
- MACSALVORS

Where to find us in 2025



Great Yorkshire Show

8-11th July 2025

A renowned annual agricultural event held in Harrogate, celebrating farming, food, and rural life, featuring livestock displays, trade stands, competitions, and entertainment.

DIY Week Live

21st-22nd October 2025

A brand new trade show to extend the DIY Week brand. This national trade exhibition is dedicated to the industry and designed to bring leading buyers and suppliers together.

Garden Press Event

18th February 2025

A media-focused event for brands to showcase new products and innovations to journalists, bloggers, and industry professionals to generate coverage and build relationships.

Garden Centre Expo

26th September 2025

A trade event where garden centre suppliers and brands showcase products, services, and trends to buyers, retailers, and industry professionals, fostering networking and business opportunities.



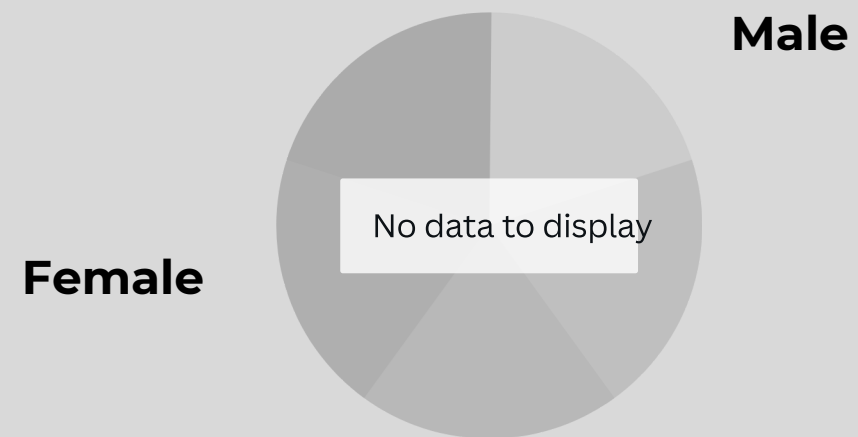
Audience and Social Media

Instagram

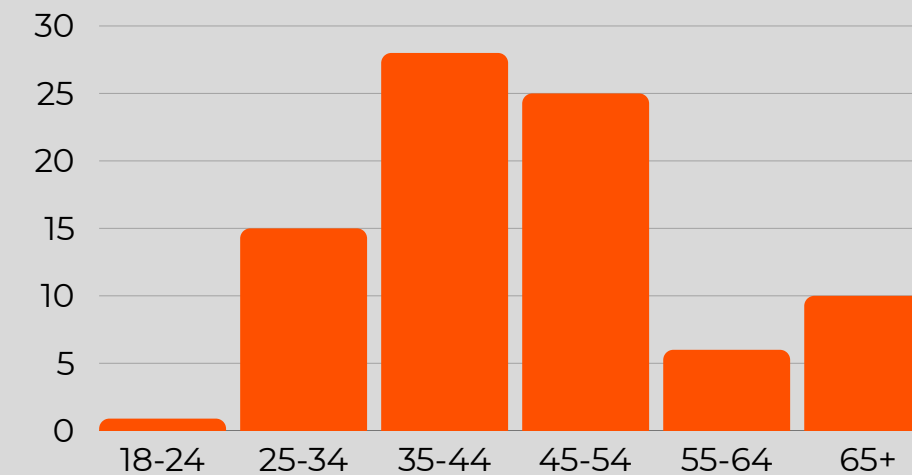
10.5K 
followers

Facebook

19.4K 
followers



By gender



By Age

Contact



JOIN THE YARD FORCE COMMUNITY

Transform your garden effortlessly with Yard Force.

Visit our website or your nearest retailer to explore our full range of innovative garden power tools.

Website: <https://uk.yardforce.eu/>
Email: marketing@yardforce.co.uk



@YardForceUK



@YardForceUK



@YardForceUK



@YardForceEurope



THANK YOU

FOR MORE INFORMATION:

visit: uk.yardforce.eu

contact: marketing@yardforce.co.uk